

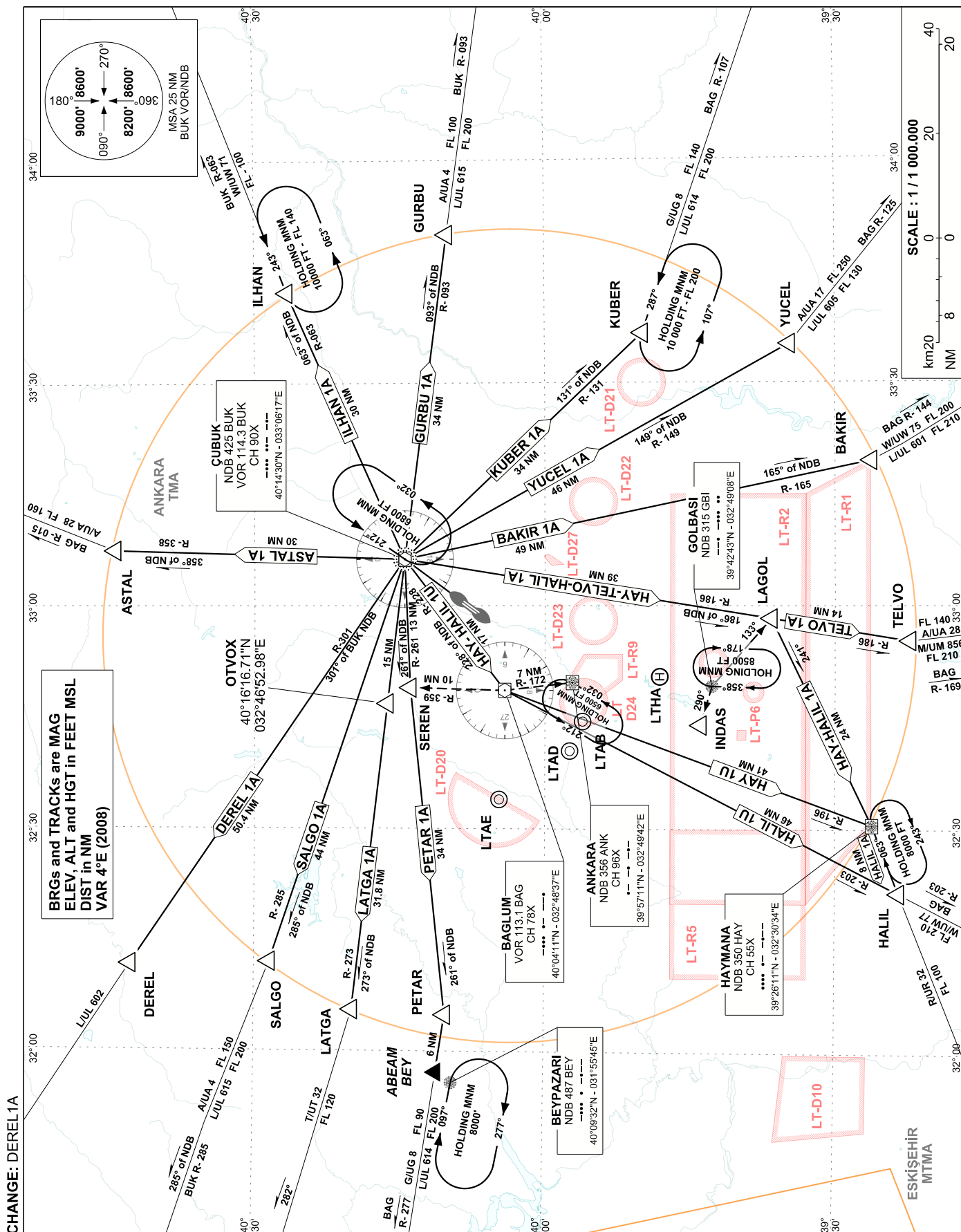
STANDARD DEPARTURE  
CHART INSTRUMENT (SID)  
ICAO

TRANSITION ALTITUDE  
10 000 FT

TWR : 257.8 - 118.1  
APP : 122.1 - 119.1 - 119.6 - 120.6

ANKARA/ESENBOĞA

RWY 03L/R



**ANKARA / ESENBOĞA AIRPORT**  
**STANDARD INSTRUMENT DEPARTURE ROUTES FOR RWY 03L/R**  
**(BASED ON BUK VOR/NDB)**

**After take off proceed to BUK then;**

<b>ILHAN 1A</b> <b>(ILHAN ONE ALPHA)</b>	Right turn intercept BUK R-063 (063° of BUK NDB) to ILHAN and join AWY.
<b>GURBU 1A</b> <b>(GURBU ONE ALPHA)</b>	Right turn intercept BUK R-093 (093° of BUK NDB) to GURBU and join AWY.
<b>KUBER 1A</b> <b>(KUBER ONE ALPHA)</b>	Right turn intercept BUK R-131 (131° of BUK NDB) to KUBER and join AWY.
<b>YUCEL 1A</b> <b>(YUCEL ONE ALPHA)</b>	Right turn intercept BUK R-149 (149° of BUK NDB) to YUCEL cross at or above FL250 and join AWY.
<b>BAKIR 1A</b> <b>(BAKIR ONE ALPHA)</b>	Right turn intercept BUK R-165 (165° of BUK NDB) to BAKIR and join AWY.
<b>TELVO 1A</b> <b>(TELVO ONE ALPHA)</b>	Right turn intercept BUK R-186 (186° of BUK NDB) to TELVO and join AWY.
<b>HAY 1A</b> <b>(HAYMANA ONE ALPHA)</b>	Right turn intercept BUK R-186 (186° of BUK NDB) to LAGOL then proceed direct to HAY NDB and join AWY.
<b>HAY 1U</b> <b>(HAYMANA ONE UNIFORM)</b>	Left turn intercept BUK R-228 (228° of BUK NDB) to BAG VOR then proceed to HAY NDB via BAG R-196 and join AWY.
<b>HALIL 1A</b> <b>(HALİL ONE ALPHA)</b>	Right turn intercept BUK R-186 (186° of BUK NDB) to LAGOL then proceed to HALIL via HAY NDB and join AWY.
<b>HALIL 1U</b> <b>(HALİL ONE UNIFORM)</b>	Left turn intercept BUK R-228 (228° of BUK NDB) to BAG VOR then proceed to HALIL via BAG R-203 and join AWY.
<b>PETAR 1A</b> <b>(PETAR ONE ALPHA)</b>	Left turn intercept BUK R-261 (261° of BUK NDB) to PETAR and join AWY.
<b>SALGO 1A</b> <b>(SALGO ONE ALPHA)</b>	Left turn intercept BUK R-285 (285° of BUK NDB) to SALGO and join AWY.
<b>ASTAL 1A</b> <b>(ASTAL ONE ALPHA)</b>	Left turn intercept BUK R-358 (358° of BUK NDB) to ASTAL and join AWY.
<b>LATGA 1A</b> <b>(LATGA ONE ALPHA)</b>	Left turn intercept BUK R-273 (273° of BUK NDB) to LATGA and join AWY.
<b>DEREL 1A</b> <b>(DEREL ONE ALPHA)</b>	Left turn intercept BUK R-301 (301° of BUK NDB) to DEREL and join AWY.

**NOTE:** This SID is only authorized for the traffic originated from ANKARA/Esenboğa Airport to points beyond İstanbul FIR when there is no jet activity within Akıncı (LTAE) CTR.

**NOTE:** This SID is only authorized for the traffic originated from ANKARA/Esenboğa Airport to points beyond İstanbul FIR when BUK-MAKOL segment of AWY L602 available and when there is no jet activity within Akıncı (LTAE) CTR.

**NOTE:** For all RWY 03 SID's minimum crossing altitude at BUK VOR/NDB is 4896 FT MSL. Criteria requires minimum climb gradient of % 3.9 (approx. 240 FT NM) until passing 6200 FT MSL.